

MOTORIZED FIRE APPARATUS DATABASE of CONNECTICUT

COMPILED BY ROB PALMER IN CONJUNCTION WITH **THE CONNECTICUT FIREMEN'S HISTORICAL SOCIETY**, MANCHESTER, CONNECTICUT

Additions, corrections, and comments to this database are welcome. We gladly accept scanned images and information about apparatus, or suggestions of other sources of information. Please contact us by using the COMMENTS section at www.thefiremuseum.org/fire-apparatus/. Thank you.

In some cases, vehicles were modified during their years in service. Due to space limitations, only one photo is displayed, but the chronology of assignments and modifications are listed.

Many departments and photographers have provided images to this project. All photographs have been credited, and that credit is overlaid on the vehicle in an attempt to protect it from unsolicited copying. Please respect the images.

Dept. Built

Dodge Power Wagon

photo needed

photo needed

*U.S. Military/Gov't
Litchfield Fire Dept.
Removed from service*

Eng 3

photo at LFC shows yellow truck from a distance.

**1942
Seagrave Corp.**



Seagrave

500 gpm 80 gal

Frank Boyd Collection

1942-1962 *Litchfield Fire Dept.*

Eng 2

1962-1967 *Northfield Fire Dept., Litchfield*

painted 10-16-1942

**1955
Maxim Motor Co.**



Ford F

500 gpm 80 gal

Maxim delivery photo

Frank Boyd Collection

1955 *Litchfield Fire Dept.*
1978 *Removed from service
Non-fire use*

Eng 1

B1305

**1958
Dept. Built**



Jeep

Litchfield Fire Dept.

1958 *Litchfield Fire Dept.
Removed from service*
2014 *Still in town*

Eng 3

*unknown if purchased new.
Or is this a '53?*

**1962
Gowans-Knight
Co.**

Chevrolet

250 gpm 1500 gal



Litchfield Fire Dept.

1962-1985 *Litchfield Fire Dept.*
1985 *Out of state - ME*

Eng 4

**1962
Maxim Motor Co.**

Maxim F-Model

750 gpm 600 gal

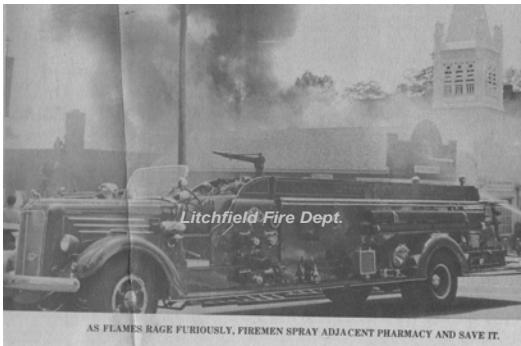


Scott Mattson Collection

1962-1986 *Litchfield Fire Dept.*
1986 *Out of state - ME*

Eng 2

*Del 5-29-1962
Otis AFB, then...private. Seen 2014.
Serial Number sequence supports the '62, as does info from Chief Koser.*



**1942
Mack Trucks**

Mack E Series

750 gpm

Litchfield Fire Dept.

1942 Stratford Fire Dept.
1965-1972 Litchfield Fire Dept.
1972 Bantam Fire Co., Litchfield

Ladder 1
Ladder 1

Did not go immediately to Litchfield from Stratford.



**1971
Gowans-Knight
Co.**

Ford F

no pump no tank

Litchfield Fire Dept.

1971-1996 Litchfield Fire Dept. Rescue 5



**1953
Maxim Motor Co.**

Maxim

250 gpm 150 gal
mid-mount - 75' Maxim

Mike Bakunis, photographer

1953 Valhalla, NY FD
1972-1989 Litchfield Fire Dept.
1989-1997? Warren Fire Dept.

Ladder 1
Ladder 1

Refurbed by G-K 1988
At Warren as of 1997
Preserved - Private - Out of state, 2013



**1978
Oren**

**Peterbilt Motors
Co.**

1500 gpm 200 gal

Lou Tibor, photographer

1978- Litchfield Fire Dept. Eng 1
Reels removed

358
serial: 15317-V 5000' LDH



**1985
Four Guys, Inc. (4
Guys)**

**Peterbilt Motors
Co.**

1250 gpm 2500 gal

Lou Tibor, photographer

1985- Litchfield Fire Dept.
2014 Out of state - IL

Eng 4

359
serial: F-896



**1986
Pierce Mfg. Inc.
Dash**

1250 gpm 1200 gal

Mike Bakunis, photographer

1986-2010 Litchfield Fire Dept. Eng 2
2010 Out of state - Parsons. KS



1973
Seagrave Corp.

Seagrave

1250 gpm 300 gal
rear-mount - 100'
Seagrave

Mike Bakunis, photographer

1973 Normandy, MO FD
1989?-2001 Litchfield Fire Dept.
1989 Refurbished by Pierce - Arrow cab

Bakunis says 1977
F-2064. accident before refurb

Ladder 1



1996
Marion Body Works

Freightliner FL series

no pump no tank

Mike Bakunis, photographer

1996- Litchfield Fire Dept. *Rescue 5*



2001
Pierce Mfg. Inc.
Lance

no pump no tank
rear-mount - 105' Pierce

Litchfield Fire Dept.

2001- Litchfield Fire Dept. *Ladder 1*



2010
Pierce Mfg. Inc.
Velocity

1500 gpm 1000 gal

Scott Leslie, photographer

2010- Litchfield Fire Dept. *Eng 2*



2014
Spartan ERV

Spartan Gladiator

1500 gpm 2500 gal

Rob Palmer, photographer

2014- Litchfield Fire Dept. *Eng 4*



1926
Foamite-Childs Corp.

500 gpm

L.Chan Brainard, photographer

taken 1956
1926? Litchfield Fire Dept. *Eng*
1943 In service as of removed from service